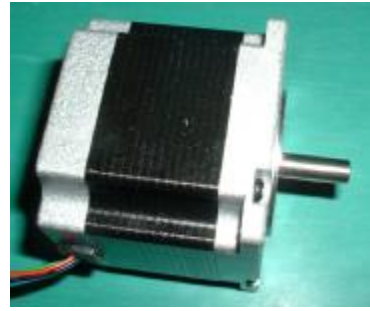


1.8° 57mm 系列大力矩混合式步进电机

电机常规参数:

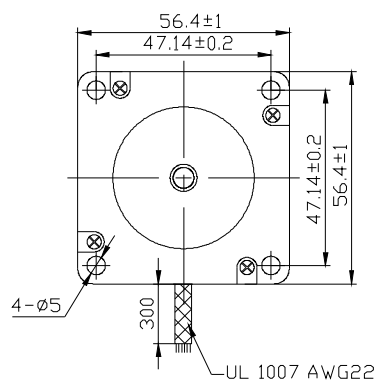
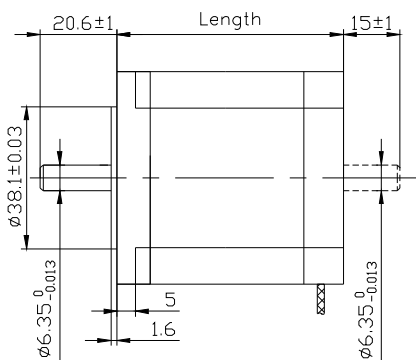
项目	参数
步距角	1.8°
步距角精度	±5% (整步, 空载)
电阻	±10%
电感	±20%
温升	80° C Max.(额定电流, 两相通电)
环境温度	-20° C~+50° C
绝缘电阻	100M Ω Min. ,500VDC
介电强度	500VAC , 1 分钟
径向跳动	0.02Max. (450 g 负载)
轴向跳动	0.08Max. (450 g 负载)
径向最大负载	75N (从法兰 20mm 处)
轴向最大负载	15N
转向	CW(从前法兰看)



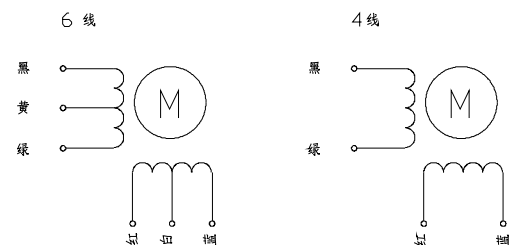
I 57mm 系列大力矩混合式步进电机参数

型号		额定电压	电流 /相	电阻 /相	电感 /相	静力矩	引出线根数	转子动惯量	重量	保持力矩	长度
单出轴	双出轴	V	A	Ω	mH	kg-cm		g-cm ²	kg	kg-cm	mm
BL57STH41-1006A	BL57STH41-1006B	5.7	1	5.7	5.4	3.9	6	120	0.45	0.21	41
BL57STH41-2006A	BL57STH41-2006B	2.8	2	1.4	1.4	3.9	6				
BL57STH41-3006A	BL57STH41-3006B	1.9	3	0.63	0.6	3.9	6				
BL57STH41-2804A	BL57STH41-2804B	2	2.8	0.7	1.4	5.5	4				
BL57STH51-1006A	BL57STH51-1006B	6.6	1	6.6	8.2	7.2	6	275	0.65	0.36	51
BL57STH51-2006A	BL57STH51-2006B	3.3	2	1.65	2.2	7.2	6				
BL57STH51-3006A	BL57STH51-3006B	2.2	3	0.74	0.9	7.2	6				
BL57STH51-2804A	BL57STH51-2804B	2.3	2.8	0.83	2.2	10.1	4				
BL57STH56-1006A	BL57STH56-1006B	7.4	1	7.4	10	9.0	6	300	0.7	0.4	56
BL57STH56-2006A	BL57STH56-2006B	3.6	2	1.8	2.5	9.0	6				
BL57STH56-3006A	BL57STH56-3006B	2.3	3	0.75	1.1	9.0	6				
BL57STH56-2804A	BL57STH56-2804B	2.5	2.8	0.9	2.5	12.6	4				
BL57STH76-1006A	BL57STH76-1006B	8.6	1	8.6	14	13.5	6	480	1	0.68	76
BL57STH76-2006A	BL57STH76-2006B	4.5	2	2.25	3.6	13.5	6				
BL57STH76-3006A	BL57STH76-3006B	3	3	1	1.6	13.5	6				
BL57STH76-2804A	BL57STH76-2804B	3.2	2.8	1.13	3.6	18.9	4				

尺寸:



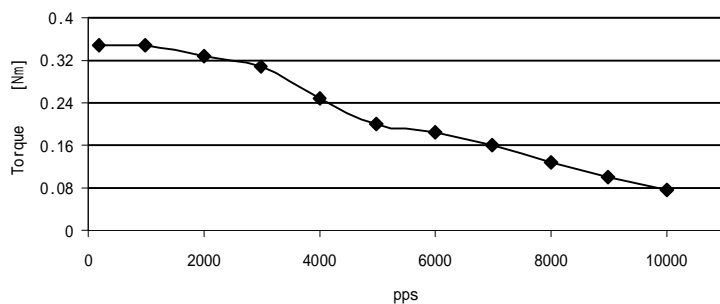
接线图:



I 矩频曲线

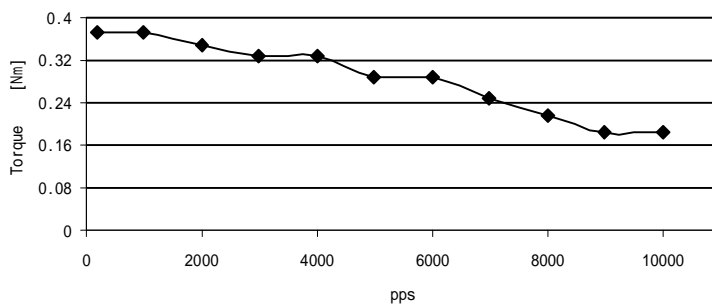
BL57STH41-1006A

电压: 30VDC; 电流: 1A /相 驱动器:LW504 半步



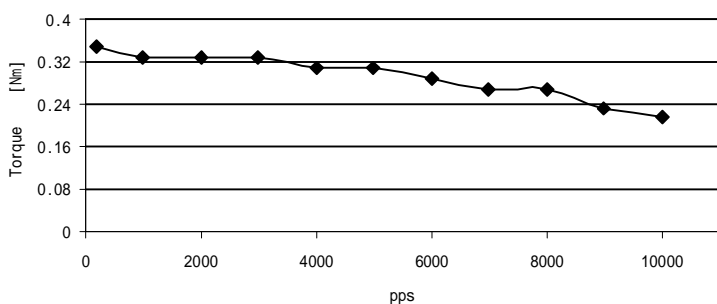
BL57STH41-2006A

电压: 30VDC; 电流: 2A /相 驱动器:LW504, 半步



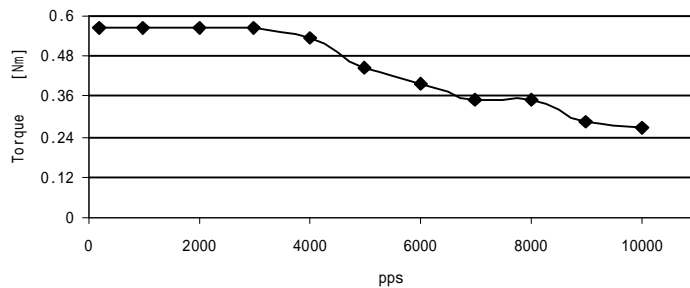
BL57STH41-3006A

电压: 30VDC; 电流: 3A /相 驱动器: M542, 半步



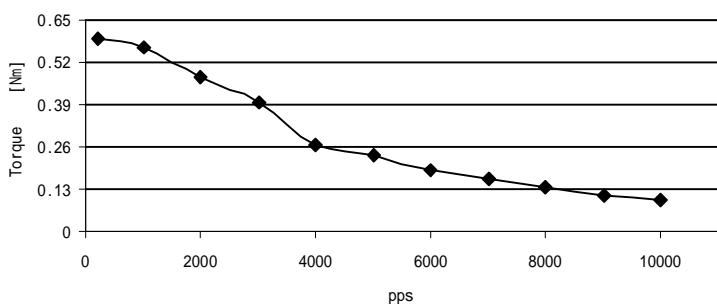
BL57STH41-2804A

电压: 30VDC; 电流: 2.7A /相 驱动器: H860B, 半步



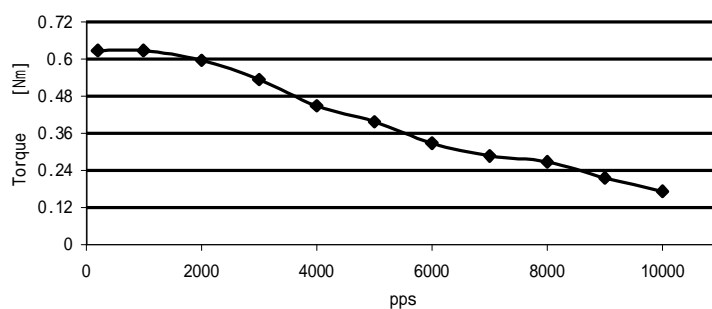
BL57STH51-1006A

电压: 30VDC; 电流: 1A /相 驱动器:LW504, 半步



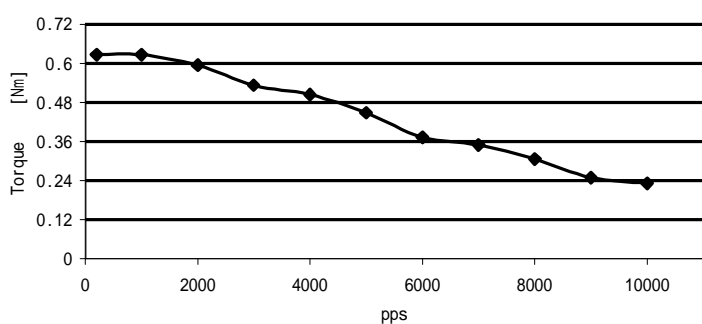
BL57STH51-2006A

电压: 30VDC; 电流: 2A /相 驱动器: LW504, 半步



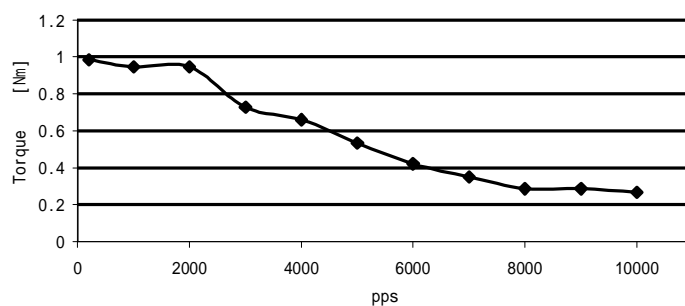
BL57STH51-3006A

电压: 30VDC; 电流: 3A /相 驱动器: M542, 半步



BL57STH51-2804A

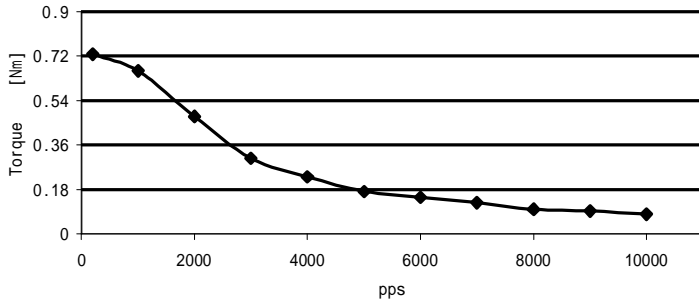
电压: 30VDC; 电流: 2.7A /相 驱动器: H860B, 半步



I 矩频曲线:

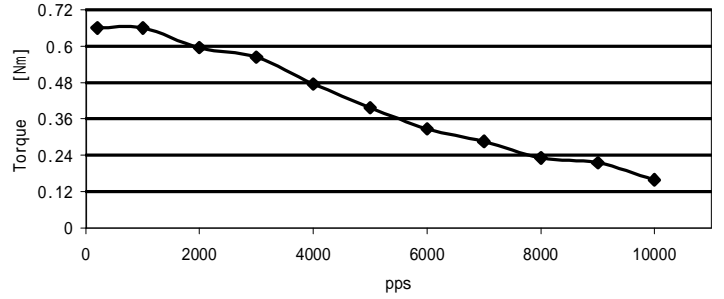
BL57STH56-1006A

电压: 30VDC; 电流: 1A /相 驱动器: HA335, 半步



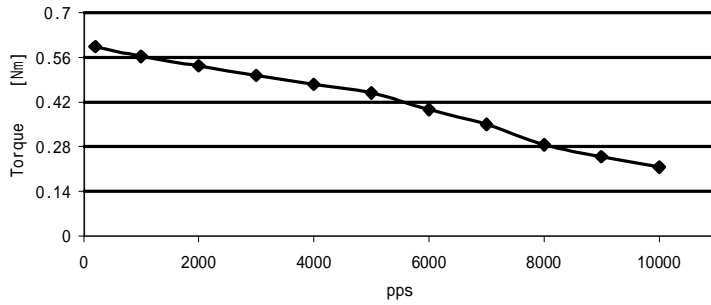
BL57STH56-2006A

电压: 30VDC; 电流: 2A /相 驱动器: M542, 半步



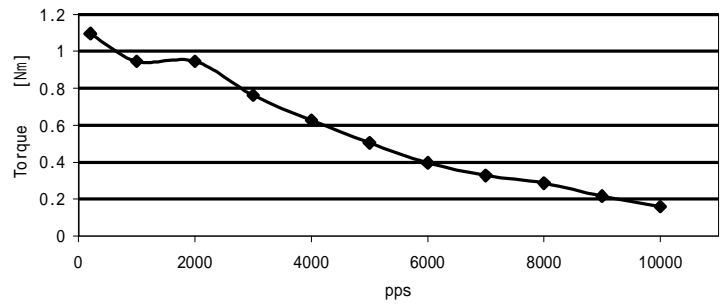
BL57STH56-3006A

电压: 30VDC; 电流: 2.7A /相 驱动器: H860B, 整步



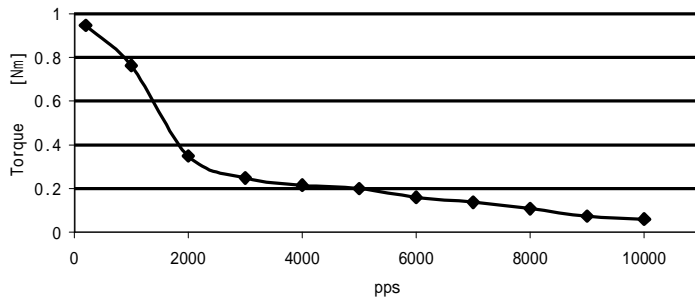
BL57STH56-2804A

电压: 30VDC; 电流: 2.7A /相 驱动器: H860B, 半步



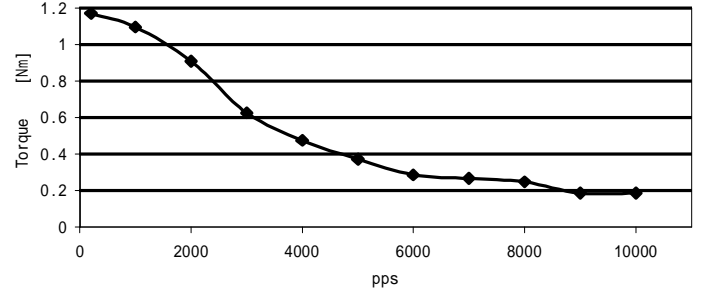
BL57STH76-1006A

电压: 30VDC; 电流: 1A /相 驱动器: LW504, 半步



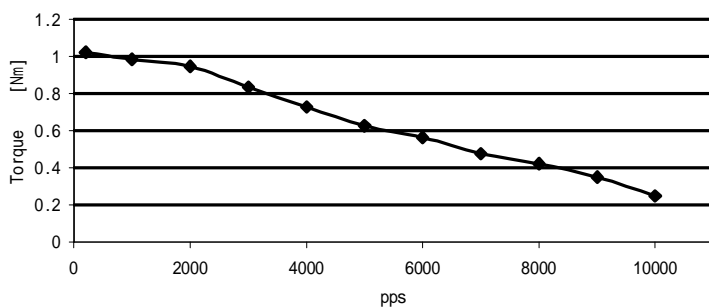
BL57STH76-2006A

电压: 30VDC; 电流: 2A /相 驱动器: LW504, 半步



BL57STH76-3006A

电压: 30VDC; 电流: 2.7A /相 驱动器: H860B, 半步



BL57STH76-2804A

电压: 30VDC; 电流: 2.7A /相 驱动器: H860B, 半步

